



Clean up in all seasons with Billy Goat!

Clean up your World™ with Billy Goat!

Welcome and thank you for your interest in Billy Goat! For over 45 years, Billy Goat has been the leader in making properties across the globe look fantastic. The equipment in this catalogue represents the best in specialty turf products with close attention to detail — both big and small alike — in an effort to make Billy Goat products simple to operate, highly productive, less fatiguing, and a pleasure to use!

Inside you will find innovative features like advanced fan technology in our blowers; hydrostatic drive systems and intuitive controls in our brush cutters, overseeders and sod cutters that take the guesswork out of ground speed and direction; and customer-friendly ergonomics that reduce noise, weight, dust and vibration across the line.

We are also pleased to expand our Renovation line-up with the acquisition of the PLUGR® brand of aerators. Combined with our all-new AE1300 Hydro Aerator, the addition of the PLUGR® aerators allows Billy Goat to offer the most innovative full line of reciprocating aerators on the market today. Have a look at our complete line of Reciprocating Aerators on pages 8 – 11.

Rest assured that Billy Goat products are customer focused, engineered and rigorously field tested to our customer's highest specifications which is why they are known for their outstanding durability and rugged performance year after year.

When it comes to cleaning up, Billy Goat features leading solutions for all your residential, commercial, and municipal cleanup needs. We invite you to review our catalogue, refer to our website, watch our videos and work with our worldwide network of stocking and servicing dealers to pick the machine that is right for your cleanup application, property or season.



Will Coates, President & CEO



Spring Pages 2-17



Summer Pages 18-23



Autumn Pages 24-41



Spring

**Spring turf and renovation projects
make for the perfect property**



NEW!



pg. 4-5



pg. 6-7

NEW!



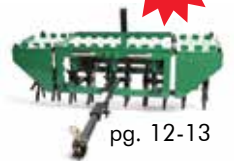
pg. 8-9

NEW!



pg. 10-11

NEW!



pg. 12-13



pg. 14-15



pg. 16-17

SC180H Hydro Drive

(Honda)

A variable speed hydrostatic transmission allows operators to match cutting speed to ground condition and also has the fastest transport speed (over 3.5 mph) of any unit on the market. Handle isolation mounts reduce vibration and fatigue. A favourite for irrigation, landscape, hardscape, sports field, flatwork, and golf customers. Honda 5.5 HP engine with 3-year warranty.



Model	Engine	Weight	Cutting Width	Cutting Depth	Length	Width	Height	Transmission
SC180H	163 cc Honda GXV160	348 lb (157.8 kg)	18" (45.7 cm)	Maximum of 2.5" (6.35 cm)	59" (149.9 cm)	26.5" (66 cm)	36.5" (90.8 cm)	Hydro Gear RT310

SC180H Features/Benefits



Hydro drive transmission. Variable speed hydrostatic drive allows user to tailor cutting speed to ground condition, maintaining sod quality and maximizing productivity. Adjustable reverse speed allows seamless manoeuvring out of tight areas quickly, without damaging sod.



Set and Forget™ blade depth adjustment to 2.5". Single lever and clamp at user's operating position adjusts simply, saving time and providing precise cutting depths.



Finger tip access drive & cut controls. Comfortably mounted for finger-tip access versus paddle or roll throttle styles.



Rear swivel castor is perfect for curved work and locks for straight cutting. Comes standard.



Multiple oversized isolation mounts are designed to absorb vibration so operator completes tasks quickly, comfortably and without fatigue.



18" cutting blade cuts sod cleanly and evenly and up to 2.5" depth. Optional 12" blade kit (Part No. 371600)



Unique drive wheels. Tough cutting conditions are easily executed as paddle style wheels clear mud and improve grip for added control.



Front bumper bar and tie down points make machine transport safe and easy with a heavy-duty front bumper bar and convenient tie-downs.





AE401H

(Honda)

Step up to the unique features of Billy Goat's 19" wide AE401 aerator and see for yourself why people are switching. Operators love the softest drive and fine engagement in the industry and the "Lift and Lock" feature that allows the tines to be raised by simply lifting up on the handle.

The AE401 eliminates cumbersome filling of a conventional centre drum found on other units on the market, which is prone to wear, vibration and damage. Instead of bulky steel weights, water weight is positioned directly over the tines for better aeration depth. Thick 'O-ring' style chain for long life, better lubrication and stands up to pressure washing.

Model	Engine	Tines	Tine Pattern	Weight	Coring Tines	Length	Width	Height	Wheels
AE401H	118 cc Honda	24	4.75" x 7" (12 cm x 18 cm)	242 lb Dry (110 kg)	.625" x 3.5" (1.6 cm x 8.9 cm)	57" (145 cm)	29" (74 cm)	52.5" (133 cm)	Semi-pneumatic

AE401H Features/Benefits



Compare how the outboard drive wheels eliminate both centre wheel slip and abuse from ramp loading with the tines engaged.



Industry's softest tine engagement and exclusive **Lift n Lock™** disengagement for best in class comfort, turning and productivity!



Proprietary water tank eliminates bulky side weights.



Tilt up serviceability, plus Fold-n-Go™ handles are excellent for transport & storage and fold without tools.



Single bolt tine fastener. Rock solid and easy to service. 50% less bolts than other units on the market.



Optional solid steel spikes are excellent for improving drainage or for other no-plug applications. Sold as a set, with 24 spikes per set. (Part No. 360394-S)



PL1800 & PL1800H (Briggs or Honda)

This compact 18" aerator is ideal for smaller property aeration or rentals and features reciprocating cam tines that propel the unit forward and drive cores up to 2.75" deep. The unit can do up to 22,000 sq. ft. per hour, is simple to operate for homeowners, easy to steer without lifting and requires no add-on weights! The easy folding handle allows for compact transport and storage. Only 4 tines and no chains along with a no-tool removable cover make for easy maintenance.

PL2500H & PL2500SPH (Honda Push or Honda Self-Propelled)

PL2500H 25" Mechanical Drive When commercial productivity and premium deep core results count, this unit delivers up to 42,550 sq. ft. of aeration per hour and punches core depths to 2.75" even in hard soil conditions. The 25" wide 2500H features 8 reciprocating cam driven tines that propel the unit forward with variable speed control from 2.5 – 3 mph and allows for a denser hole pattern at slower speed where needed. The unit is easy to manoeuvre without lifting, requires no add-on weights, has no chains and is simple to service. This unit is preferred on flatter landscapes, while our self-propelled hydro-drive is preferred on hilly applications.

PL2500SPH 25" Hydro Drive For the best combination of productivity, operator comfort, superior aeration results, variable hole density and remarkably low maintenance in its class, consider our PL2500SPH 25" Hydro-Drive unit. This model has all the benefits of the PL2500H, but steps up to a variable speed hydro-drive that not only eliminates fatigue from pushing while transporting or ramp loading, but also provides commercial operators with enhanced control while aerating on hilly areas.

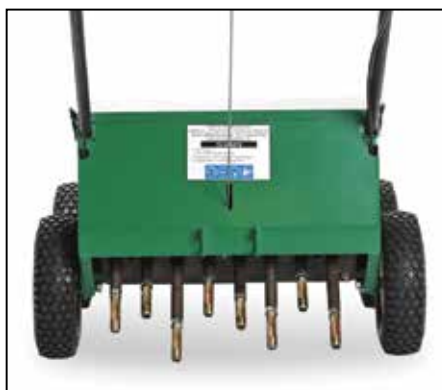


Model	Engine	Hydro-Drive	Tines	Tires	Weight	Height	Overall Width	Length	Core Spacing	Core Depth	Sq. Ft./Hr.
PL1800	205 cc Briggs	No	4 / 5/8" dia.	12" Semi-Pneumatic	240 lbs (108.8 kg)	40" (101.6 cm)	24" (61 cm)	57" (144.8 cm)	3.63" x 6"	Up to 2.75"	Up to 22,000
PL1800H	118 cc Honda	No	4 / 5/8" dia.	12" Semi-Pneumatic	240 lbs (108.8 kg)	40" (101.6 cm)	24" (61 cm)	57" (144.8 cm)	3.63" x 6"	Up to 2.75"	Up to 22,000
PL2500H	163 cc Honda	No	8 / 5/8" dia.	12" Semi-Pneumatic	284 lbs (128.8 kg)	41.25" (104.8 cm)	32.5" (82.5 cm)	67.5" (171.5 cm)	2.6" x 7.5"	Up to 2.75"	Up to 42,500
PL2500SPH	196 cc Honda	Yes	8 / 5/8" dia.	12" Pneumatic	360 lbs (163.3 kg)	41.25" (104.8 cm)	32.5" (82.5 cm)	67.5" (171.5 cm)	2.6" x 7.5"	Up to 2.75"	Up to 35,000

PLUGR® 18" to 25" Features/Benefits/Accessories



User friendly controls. Handle has fingertip controlled bale for engaging drive/tine with auto stop safety feature. To raise and lower tines, the tine retractor lever is comfortably top mounted. SPH has a side by side bale – one for tining and one for drive.



Tensile hardened thin wall tines. Simple, durable screw in design makes service simple. In/out reciprocating tine motion produces less compaction on the inner surface of the hole compared to spoon designs. Four tines on PL1800 model & 8 tines on PL2500 series 5/8" dia. standard on all.



One piece lift-off removable cover offers ease of maintenance. Easy-release rubberized fasteners offer quick and easy hood removal for 100% access to all components.



Reciprocating heat-treated crankshaft assembly drives tines deep into hard soils.

Spring loaded rotor assist for aggressive forward motion of the tine rods. Punches tine core depths to 2.75", even in hard soil conditions. (PL2500H)



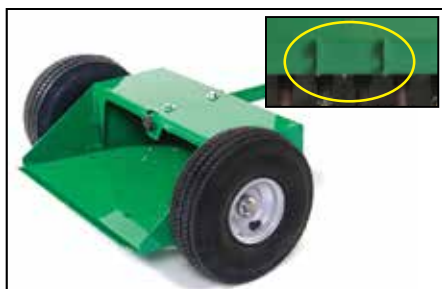
Easy fold handles (PL1800H). Folding handles provide compact transport and storage.



Speed adjust lever (2500H). 3 speeds. Allows for denser hole pattern at slower speed where needed. Match speed to match landscape complexity, lawn size, operator comfort and maximum productivity.



Hydrostatic-drive transmission (PL2500SPH). Simple hydro-drive front wheel system handles up to 20-degree hills. Eliminates fatigue from pushing during transport or ramp loading.



Chariot with quick release receiver hitch (2500SPH) is built in for an optional chariot (Part No. 362600), converting walk-behind to ride-behind comfort. Reduces operator fatigue and increases productivity.



Optional tines. Assorted tine sizes and styles offer a solution for every turf condition. Choose from 3/8" Solid (Part No. 381151); 7/8" Solid (Part No. 381149); 3/8" Hollow (Part No. 381150); Standard 5/8" Hollow (Part No. 381057); Zoysia Transfer (Part No. 381152)



Service Kits. Common replacement parts for your PLUGR Aerator: PL1800 ser (Part No. 380204); PL2500H (Part No. 380205); PL2500SPH (Part No. 380206).

NEW!
PATENT
PENDING
TECHNOLOGY



ONE & DONE
AERATION

Patent Pending technology

AE1300H

(Honda)

This machine combines true 30" wide aeration and speed up to 4.3 mph to complete ¼ acre in as little as 15 minutes! 59% faster than a 26" drum.

Variable aeration density (VAD) from 8 to 48 holes per square ft. in one pass compared to an avg. fixed hole pattern of 6 on drums and variable hydro drive for aeration in both forward and reverse.


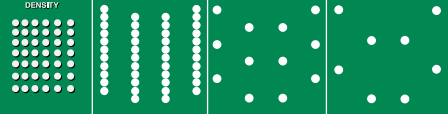
Honda power, Hydro-Gear drive & pump, Eaton Motor, Flextech™ arms, and only two #50 chains combine for the ultimate in commercial reliability. Reciprocating action drives plugs up to 2x the depth of drums, especially in drier conditions. Soil condition or type is a non-issue. Aerate wet or dry, saving time and maximizing profitability.

ONE MACHINE does the same work as a 19" and 26" drum working at the same time with only ONE OPERATOR. Up to 2x as many plugs in ONE PASS. Eliminate shallow plugs, damaged turf and call backs. Aerate ONE TIME with Billy Goat.



Model	Engine	Tines	Tyres	Weight	Height	Overall Width	Length
AE1300H	390 cc Honda	8	15" pneumatic	520 lbs (236 kg)	46" (117 cm)	34.5" (87 cm)	67" (170 cm)

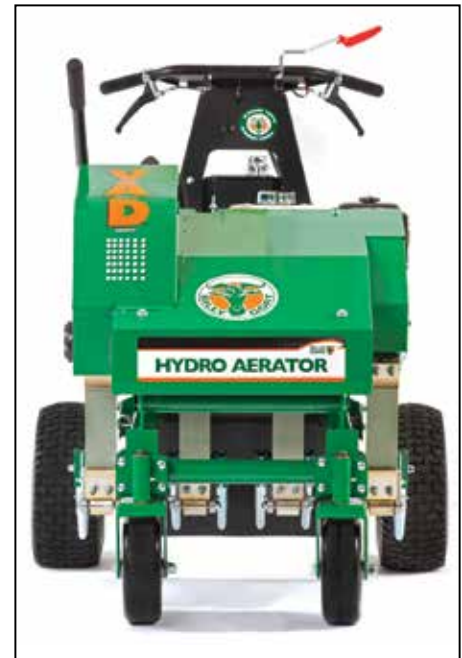
AE1300H Features/Benefits/Accessories

	.5 mph	2 mph	4 mph
	48 holes/ft ²	12 holes/ft ²	8 holes/ft ²
Patch & Seed	High Hole Density	Top Speed Aeration	
			

Variable Aeration Density creates 2-10 times more holes than drum models in one pass! Eliminates double aerating and offers ability to do patch repair and seed bed prep in one pass.



"In-ground" steering for unmatched manoeuvrability, ergonomics, ease of turning, improved production, reduced downtime and turf repair when compared to drum aerators. Plus, **reverse aeration** adds even more productivity!



30" wide aerating productivity is combined with outstanding durability, speed, deep plug depth and no need to double aerate! This machine fits everywhere you need to go. No need for both large and small machines.



Self-propelled, variable speed, intuitive hydro-drive controls allow you to feather the speed and aerate in both forward and reverse with finger tip control. Reduces fatigue and vibration. Takes the chore out of the chore!



Independently acting, "FLEXTech" arms are durable and forgiving for unmatched reliability! Reciprocating action drives plug depths up to 2x that of drums. Significantly reduces call backs and/or rework regardless of soil conditions. Patent Pending.



Ride on Chariot for larger open area aeration such as sports fields and large commercial runs. (Part No. 362600)



Slopes up to 20 degrees. This unit has 15" tyres and a 35" wheel base to accommodate slopes up to 20 degrees. Optional foam filled tyres can improve results further. (Part No. 362601)



Fast fine service. Only 8 tines and 4 bolts which are easily accessed and takes 10% of the time needed to service 40+ tine, 2-bolt drum units.



Optional solid steel spikes are excellent for improving drainage or for other no-plug applications. Sold individually. (Part No. 360394)

AET48

For larger property aeration, the tow behind AET48 is the ultimate in productivity and flexibility.

The standard 48" modular unit easily configures down to 24" and features interchangeable parts. Each 24" unit has four fine stars with 6 tines each that core up to 3" deep. Cuts service time with single bolt fine fastener.

Can also be configured up to 72" wide with the optional AET Expansion Kit. (Part No. 361273.)



Shown with optional water weight jugs



Will accept cinder blocks or sandbags for extra weight.



AET60

At up to four acres an hour, the AET60 is ideal for heavy duty, large property municipal, commercial, sport turf, estate or cemetery aerations. The AET60 offers flexible aeration widths at 36", 48" or 60" with a simple flip up or down of the aerator's wings. This unit weighs in at 440lb (almost double our AET48) without supplemental weights for deep, hard soil aeration. For maximum manoeuvrability, the AET60 also features swivelling tine assemblies (when used with 3-point hitch). Mounts to a standard tow bar or category 1, 3-point hitch. Runs up to 5 mph and pulls behind any type of tow vehicle. Provides a quality 6" x 7" aeration pattern up to 4" deep. Manual jack lifts and lowers tines with two pneumatic wheels for transport.

Model	Tires	Tine Depth	Hitch Type	Dry Weight	Length	Width	Height	Jug Capacity	Towing Requirements
AET48	10" (25 cm) pneumatic	Up to 3" (7.6 cm)	5/8" Pinned Tow Bar*	240 lb (109 kg)	66" (168 cm) wheel to wheel	65" (165 cm)	29" (74 cm)	40 lbs (18 kg) ea. w/5 gal (19 ltr) water	15 HP min. riding mower or tractor
AET60	13" (33 cm) Pneumatic	Up to 4" (10.2 cm)	3-pt hitch or standard tow bar	440 lbs (199.6 kg) without auxiliary ballast	Extendable tongue. Shortest length is 76"; extends 12" to 88"	37 - 60" (94 - 152 cm)	35" (89 cm)	N/A	20 HP min. riding mower or tractor

AET48 Features & Specifications



Tine engagement. Engage tines by stepping on the footpad. Disengage by pulling out the spring loaded lever.



Single bolt tine fastener. Rock solid and easy to service. 50% less bolts than other units on the market.



Easy Fill & Drain Weight Jugs weigh over 40 lbs each when filled with 5 gallons of water. 2 jugs/per 24" unit (Not included, sold individually. Part No. 361100.)



Pillow block bearings with grease zerks reduce wear and downtime for maintenance.

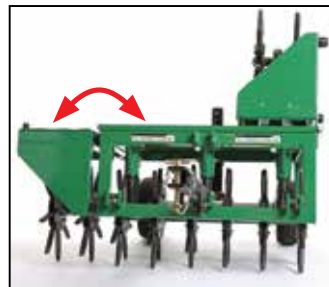


24 Tines. Four stars per section, with six tines, each core up to 4" deep.

AET60 Features & Specifications



80 Hardened steel tines for more efficient extraction of plugs. The tine wheels swivel for superior manoeuvrability (when used with 3-point hitch).



Foldable wings raise and lower for desired aeration width, 36", 48" or 60".



Category 1, 3-point hitch mounting. Tines swivel for 3-point hitch mounting.



Manual lift. Raise and lower tines with ease.

**EXCLUSIVE
AUTO DROP™
SYSTEM!**

OS552H with Auto Drop™ (Honda)

Comes with a 20" vertislicing delta reel that creates the ideal environment for seed to soil contact and high germination rates. Heavy-duty infinite height adjustment for precise depth adjustment gives longer blade life than preset adjustments. It features steel guards to protect bearings and pulleys, inside engagement bail and padded handle, easy adjustable idler and premium pulleys.



Model	Engine	Depth Adjustment*	Seeding Width	Productivity	Weight	Length	Width
OS552H	162 cc Honda	.125" → .5" (0.3 cm → 1.3 cm)	20" slicing (51 cm)	13,200 sq.ft/hr	179 lb (81.2 kg)	45.5" (116 cm)	26.5" (67 cm)

*With up to an additional 1/2 inch (1.3 cm) of adjustment for blade wear.

OS552 Features/Benefits



25 lb front mounted poly seed box with on-board customer instructions to help set drop rates for various seed. The box and agitator bar won't rust or dent – standard on the overseeder.



Heavy-duty wheels with steel rim and roller bearings stand up to the most demanding customers and applications.



Auto Drop™ system is easy to adjust, with drop rates for a variety of seeds listed in on-board instructions.



Fold-n-Go™ no tool, no bolt foldable handle with inside bail and padded handles. Great for comfort, storage, transport and long life. (PR550 unit shown).

CR550HC

(Honda)

This Compact Power Rake manoeuvres easily around small properties, removing matted thatch from turf in 20"/ 51 cm passes. A 5 HP Honda engine is coupled to a free-swinging heat treated tempered flail blade reel, mounted to construction grade cast iron pillow block bearings with grease zerks. The flail reel can be changed over to an optional slicing reel in 10 minutes.

Heavy-duty single piece construction for low vibration and comfort, Fold-n-Go™ foldable handles for simple transport, premium inside mounted engagement bale, heavy-duty steel pulleys and adjustable idler permits tension setting for maximum belt life.

**WEIGHS
ONLY
129 LBS!**



PR550H

(Honda)

The PR550H efficiently removes matted thatch from turf in 20" passes, and its rugged design withstands the most demanding use.

A 5.5 HP Honda or Vanguard engine coupled to a free-swinging heat treated tempered flail blade reel, mounted to construction grade cast iron pillow block bearings with grease zerks. Steel guards to protect bearings and pulleys, heavy-duty wheels, Inside engagement bail and padded handle. Convertible to overseeder or verticlicer with optional accessories.

Model	Engine	Depth Adj	Depth*	Reel	Productivity	Weight	Length	Width
CR550HC	160 cc Honda GC	Infinite	(0.5" → 0.75") (1.3 cm → 1.9 cm)	20" Flail (51 cm)	13,200 sq.ft/hr	129 lb (58.5 kg)	38.5" (98 cm)	28.5" (72 cm)
PR550H	162 cc Honda	Infinite	(.125" → .5") (0.3 cm → 1.3 cm)	20" Flail (51 cm)	13,200 sq.ft/hr	162 lb (73.5 kg)	45.5" (116 cm)	26.5" (67 cm)

*With up to an additional 1/2 inch (1.3 cm) of adjustment for blade wear.

**Add "V" to the end of PR or CR model to order with verticlicing reel.

***Add "T" to the end of a PR model to order with spring tine reel standard.

CR550HC Features/Benefits/Accessories



Flail reel is standard on CR. Perfect for accumulated thatch to ½ inch (1.3 cm) or more. Helps restore healthy growth of turf. (Part No. 350241)



Infinite, heavy-duty depth adjustments save on blade wear when compared to preset adjustments that may promote premature flail wear.



Construction grade cast iron bearings come with grease zerks for purging dirty grease. Also standard on PR550.

PR550H Features/Benefits/Accessories



Fold-n-Go™ no tool, no bolt foldable handle with inside bail and padded handles. Great for comfort, storage, transport and long life.



Infinite, heavy-duty depth adjustments save on blade wear when compared to preset adjustments that may promote premature flail wear.



Premium pulleys, easy to adjust idler, and easy to change belt contribute to simple service and long life. Protected by a steel guard.



Flail reel is standard on PR. Heat treated and tempered blades stand up to heavy use. (Part No. 350112)



Optional spring tine reel efficiently removes thatch with a softer touch where sprinkler heads or other objects may be a concern. Can be ordered standard with PR. See note *** under specs on prior page. (Part No. 350355-S)



Optional verticising reel is perfect for overseeding and thinning running grasses. Can be ordered standard on a PR and CR. See notes ** under specs on prior page. (Part No. 350113 for PR and Part No. 350252 for CR)

Summer

Meadow and brush mowing the easy way





pg. 20-21



pg. 22-23

BC2600HM, BC2600ICM

(Honda or Briggs) - Manual

The Outback® BC26 mechanical “drive” brushcutter, designed for cutting through overgrown brush is ideal for clearing meadows and fields or cutting paths and trails wherever dense brush and weeds present a clean-up challenge. The 26” wide rigid deck commercial duty brush hog tackles brush up to 6’ high, grass and weeds over 8” tall and saplings up to 2” diameter.



BC2600HH, BC2600HEBH & BC2600ICH

(Honda or Briggs) - Hydro

The Outback® Hydro brushcutter is a 26" commercial-duty walk behind brush hog ideal for rough terrain, hills up to a 20-degree slope, and wet or uneven conditions. Make quick work of under-brush, berries, bramble, vines, tall grass and small trees up to 2" diameter and 6' tall – all at a rate of just under an acre of brush per hour.

**HYDRO DRIVE.
IDEAL FOR
ROUGH TERRAIN,
HILLS & HIGH
BRUSH!**



Model	Engine	Start	Cut Width	Deck	Productivity	Weight	Length	Width
BC2600HM	388 cc Honda	Pull	26" (66 cm)	Fixed	28,600 sq. ft/hr	336 (152.5 kg)	81.5" (207 cm)	30.75" (78 cm)
BC2600ICM	344 cc Briggs	Pull	26" (66 cm)	Fixed	28,600 sq. ft/hr	336 (152.5 kg)	81.5" (207 cm)	30.75" (78 cm)
BC2600ICH	344 cc Briggs	Pull	26" (66 cm)	Floating	28,600 sq. ft/hr	309lbs (140kg)	81.5" (207 cm)	30.75" (78 cm)
BC2600HH	388 cc Honda	Pull	26" (66 cm)	Floating	28,600 sq. ft/hr	317 lbs. (144 kg)	83" (211 cm)	31" (79 cm)
BC2600HEBH	388 cc Honda	Electric	26" (66 cm)	Floating	28,600 sq. ft/hr	341 lbs. (155 kg)	83" (211 cm)	31" (79 cm)

BC2600HHEU

(Honda)

The BC26HHEU has a 66 cm wide deck with higher tip speed for improved speed and cut quality. The Tuff Torq™ hydrostatic transmission with fully automatic Enhanced Traction Control (ETC) offers superior traction on uneven terrain and handles slopes up to 20-degrees. The pivoting brush deck hugs the ground for a better cut, minimizing scalping and the cut height is adjustable from 4.5 cm to 9.5 cm.

Ergonomically-angled plow-style handles with padded grips provide comfort and protection. And direct from-the-handle forward and reverse lever, the user can operate the motion of the machine with ease.

**HYDRO DRIVE.
IDEAL FOR
ROUGH TERRAIN.
HILLS & HIGH
BRUSH!**



Model	Engine	Start	Cut Width	Deck	Productivity	Weight	Length	Width
BC2600HHEU	13hp Honda	Pull	26" (66 cm)	Floating	28,600 sq. ft/hr	341 lbs. (155 kg)	80" (203cm)	31" (79cm)

BC26 Fixed Deck Features/Benefits



Heavy duty blade spindle is reinforced in four directions for maximum durability and safety, so you can keep cutting in the harshest environments.



Rigid deck provides excellent stability in deep vegetation while mowing your meadows. Angled rear discharge deck eliminates packing and wind rows.



Heavy duty mechanical transaxle combines the transmission and differential into one sealed package with no linkages to snag on brush. 3 speeds and reverse. Underside guarding protects belts and clutch area. Also standard on the BC26 Hydro unit.



Ergonomically-angled control handles with padded grips. Intuitive drive controls make it easier to move forward and reverse. Wide plow style handles with padded grips and guards for maximum protection and leverage in deep brush.

BC26 Hydro Features/Benefits



Tuff Torq™ hydrostatic transaxle with ETC (Enhanced Traction Control) is fully automatic, sensing when the rear wheel starts to spin, locking the wheel and giving it positive traction. Provides superior traction on hills or in wet and uneven conditions.



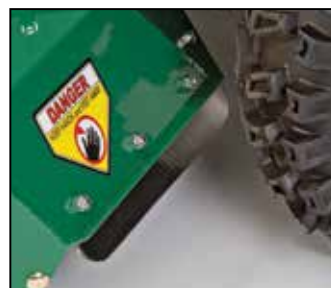
Pivoting deck ± 12 degree pivoting deck with proprietary return to neutral is engineered to glide over uneven terrain and deep brush. 26" wide deck with higher tip speed for improved cut quality.



Intuitive drive controls & handles with padded grips. Best in class control package allows the user to feather in forward and reverse directly from the handles - no shifting required.



Wider tractor tyres for better grabbing and pulling power.



Rubberized rear deck trim allows for easier stump clearance in reverse.



Heavy duty blade spindle is reinforced in four directions for maximum durability and safety, so you can keep cutting in the harshest environments.



Autumn

Clean up with world-class
blowers, vacuums and
debris loaders



pg. 26-29



pg. 30-31



pg. 32-33



pg. 34-35



pg. 36-37



pg. 38-41

FORCE™ vs BACKPACK PRODUCTIVITY & AVERAGE LEAF CLEARING TIME

	Hours per 1/2 Acre	Hours per 1 Acre	Hours per 2 Acres	
Hand-held	5 hrs. 24 min.	N/A	N/A	N/A
Large Backpack	2 hrs. 45 min.	5 hrs. 29 min.	N/A	—
6 HP Force™	1 hr. 12 min.	2 hrs. 23 min.	4 hrs. 46 min.	2.3 x faster
9 HP Force™	43 min.	1 hr. 26 min.	2 hrs. 52 min.	3.8 x faster
13 HP Force™	27 min.	53 min.	1 hr. 46 min.	6.2 x faster
18 HP Force™	24 min.	47 min.	1 hr. 24 min.	7.0 x faster

PERFECT FOR HOMEOWNERS AT ONLY 76 LBS!



F601S & F601V

(Subaru or Vanguard)

At only 76 pounds, this unit is one of the lightest in its class making it a breeze to roll through the yard. Ideal for residential cleanup, it costs little more than a backpack, but is 2.5 times more powerful so you'll get your work done faster with less fatigue. 1-year engine and machine warranties.



Air volume = 2.3x backpacks*

F902H, F902S & F902SPS

(Honda or Subaru)

Step up to commercial cleanup power! This unit is ideal for medium size maintenance contractors and large property owners. The self-propelled option increases productivity so you can rip through 30% more property per day. 5-year Subaru engine warranty, 3-year Honda engine warranty, 2-year machine warranty and 5-year housing warranty.



Air volume = 3.8x backpacks*



SELF-PROPELLED OPTION!

Model	Engine	Velocity	Fan	Discharge	Weight	Front Wheels	Rear Wheels	Length	Width	Height
F601S	169 cc Subaru	Just under 200 mph	16" 16-blade Single Shot Composite	3.5" (9 cm)	76 lb (35 kg)	8" x 3" Semi-pneumatic	10" x 3" Pneumatic	43.5" (111 cm)	22" (56 cm)	26" (housing), 45" (handle)
F601V	205cc Vanguard	Just under 200 mph	16" 16-blade Single Shot Composite	3.5" (9 cm)	76 lb (35 kg)	8" x 3" Semi-pneumatic	10" x 3" Pneumatic	43.5" (111 cm)	22" (56 cm)	26" (housing), 45" (handle)
F902S	265 cc Subaru	Just under 200 mph	17" 16-blade Single Shot Composite	4" (10 cm)	130 lb (59 kg)	10" x 3" Pneumatic	13" x 5" Pneumatic	58" (147 cm)	29.25" (74 cm)	32.5" (housing), 45" (handle)
F902SPS	265 cc Subaru	Just under 200 mph	17" 16-blade Single Shot Composite	4" (10 cm)	143 lb (65 kg)	10" x 3" Pneumatic	13" x 5" Pneumatic	58" (147 cm)	29.25" (74 cm)	32.5" (housing), 45" (handle)
F902H	262 cc Honda	Just under 200 mph	17" 16-blade Single Shot Composite	4" (10 cm)	139 lb (63 kg)	10" x 3" Pneumatic	13" x 5" Pneumatic	58" (147 cm)	29.25" (74 cm)	32.5" (housing), 45" (handle)

*Relative to most large backpacks

SELF-PROPELLED OPTION!



F1302H & F1302SPH
(Honda)

Professional power and productivity, this Honda powered unit is a favourite for full-size landscapers, seal coaters, schools, parks departments, cemeteries, resorts, street departments, golf and estate properties. 3-year engine warranty, 2-year machine warranty, 5-year housing warranty.



Air volume = 6.2x backpacks*

F1802SPV
(Vanguard)

The ultimate in volume and power! A 6" discharge with air velocity of just under 200 mph will blow and push leaves and debris farther so you can clean up faster than with any other blower in our lineup. Most manufacturers don't even make 'em! 3-year engine warranty, 2-year machine warranty, 5-year housing warranty.

SELF-PROPELLED OPTION!



Air volume = 7x backpacks*

Model	Engine	Velocity	Fan	Discharge	Weight	Front Wheels	Rear Wheels	Length	Width	Height
F1302H	393 cc Honda	Just under 200 mph	17" 16-blade Single Shot Composite	5" (13 cm)	152 lb (69 kg)	10" x 3" Pneumatic	13" x 5" Pneumatic	58" (147 cm)	28.5" (72 cm)	32.5" (housing), 45" (handle)
F1302SPH	393 cc Honda	Just under 200 mph	17" 16-blade Single Shot Composite	5" (13 cm)	165 lb (75 kg)	10" x 3" Pneumatic	13" x 5" Pneumatic	58" (147 cm)	28.5" (72 cm)	32.5" (housing), 45" (handle)
F1802SPV	570 cc Vanguard	Just under 200 mph	17" 16-blade Single Shot Composite	6" (15 cm)	183 lb (83 kg)	10" x 3" Pneumatic	13" x 5" Pneumatic	58" (147 cm)	29.25" (74 cm)	32.5" (housing), 45" (handle)

*Relative to most large backpacks

Force™ Features/Benefits/Accessories



Patented Aim N Shoot™ directs the airflow where you need it most with fingertip control and is lockable for single positions. Air is up to 52% more concentrated vs. square steel discharge.



Self-propelled. Forget the fatigue associated with pushing blowers. The 9 HP Subaru, 13 HP Honda and 18 HP Vanguard engines have self-propelled options to increase productivity!



Smooth, rounded housing vs steel eliminates air voids for quiet output and maximum performance! Proven design won't rust or dent! Backed by a 5-year warranty. (Excludes F601S.) Plus, compare against the weight of steel!



Force blowers are up to 30% lighter than other units on the market. Easier to push and far more productive.



Improved fan technology features a single shot 16 blade, closed face fan. That's twice as many blades as most manufacturers and is far lighter than steel fans and easier to start on cold days. It's standard on all models and is the ultimate in performance and reliability!



Quietest on the market. The quiet operation of the Force™ compared to backpacks and steel blowers is a welcomed relief among users and in neighbourhoods.



Forward discharge. Improved design of soft rubber is standard on F9 and F13. (Not available on F18.) It's a snap to install and is perfect for cleaning along walls and fences! (Optional kit on F601S model. Part No. 441130)



Castor wheel kit allows more manoeuvrability in tight spaces for moving airflow from side to side, without off-weighting the front wheel. (Optional for F9, F13 and F18 models only. Part No. 440293)



Quick hold down kit. Quick trailer lock down attachment saves time. (Optional for F9, F13 and F18 models only. Part No. 440120)



Parking brake kit prevents roll-aways on inclines and saves relocation time when you need to step away. (Optional for F9, F13 and F18 models only. Part No. 440140)



10-ft hose kit easily fits over nozzle to direct airflow into hard to reach spaces. 4"D x 10'L. (Optional for F601S model only. Part No. 441166)



Foam filled front tyre. Flat free tyre is lightweight and rolls easily over terrain. (Optional for F9, F13 and F18 models only. Part No. 440279)

KV600 & KV650H

(Briggs or Honda Push)

KV600SP & KV650SPH

(Briggs or Honda Self-Propelled)

Ideal for residential or smaller commercial property maintenance, Billy Goat's versatile 27" wide lawn and litter vac has variable height adjustment for hard surface or turf work. 12" tyres on the push unit and rear wheel drive on the self-propelled unit make operation simple even in hilly turf environments. Optimized nozzle configuration improves suction and debris flow and handles hedge clippings with ease.

KV self-propelled model shown with optional 4" x 8' hose kit. Ideal for cleaning between shrubs, under decks, window wells, utilities and other hard to reach areas.



TKV650SPH

(Honda Self-Propelled)

The TKV model offers all the great features of our KV model but has an integral on-board 2" chipper. Now you can add branches to all your leaf, seed, bloom, mulch, litter, and debris cleanup jobs. Self-propelled is standard on the TKV.

Model	Engine	Self-Propelled	CFM	Bag Volume	Bag	Weight	Length	Width
KV600	190 cc Briggs	No	1700	40 gal (151 ltr)	Mesh w/dust skirt	112 lb (51 kg)	62" (158 cm)	26.75" (68 cm)
KV600SP	190 cc Briggs	Rear	1700	40 gal (151 ltr)	Mesh w/dust skirt	129 lb (59 kg)	62" (158 cm)	26.75" (68 cm)
KV650H	187 cc Honda	No	1700	40 gal (151 ltr)	Mesh w/dust skirt	113 lb (51 kg)	62" (158 cm)	26.75" (68 cm)
KV650SPH	187 cc Honda	Rear	1700	40 gal (151 ltr)	Mesh w/dust skirt	132 lb (60 kg)	62" (158 cm)	26.75" (68 cm)
TKV650SPH	187 cc Honda	Rear	1700	40 gal (151 ltr)	Mesh w/dust skirt	141 lb (64 kg)	62" (158 cm)	26.75" (68 cm)

KV/TKV Features/Benefits



Integral dust skirt keeps dust down and away from the operator. **Optional felt bag** is available for better dust control. (Part No. 891126)



Hard bottom breathable mesh turf zipperless bag uses two easy open fasteners for long life and simple unloading. Bottom loading.



New single speed rear self-propelled is great in hilly turf applications. (KV600SP, KV650SPH and TKV650SPH only)



5-blade serrated impeller maximizes both suction and debris reduction.



Optional hose kit with telescoping handle is ergonomic and great for cleaning hard to reach places. (Part No. 891125)



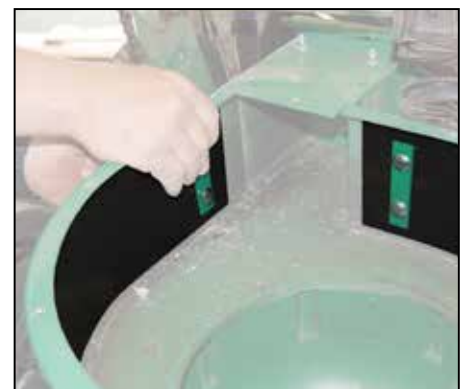
The castor kit (Part No. 891128) and **nozzle wear kit** (Part No. 891127) increase manoeuvrability and help protect your investment against wear on hard surfaces.



The weatherproof cover is ideal for protecting your machine from the elements. (Part No. 891137)



TKV On-board 2" chipper. Now you can add branches to all your leaf, seed, bloom, mulch, litter, and debris cleanup jobs.



Optional liner sleeve protects housing in sandy conditions (Part No. 891134) and new Shredder Kit reduces dry leaves up to 12:1 (Part No. 891153)

LB352

(Briggs)

Weighing only 25.85 kg / 57 lbs our 51 cm / 20" wide entry level vacuum is particularly light and manoeuvrable and features superior suction. The unit is ideal for vacuuming leaves, grass, flower heads and seeds from pool areas, patios or small gardens.



Features/Benefits



Superior suction via 51 cm / 20" wide nozzle is a favourite for small gardens.



Wheel adjustment is at your fingertips to accommodate hard surface or turf work



Bag attachment has a 105 ltr capacity and is harness mounted on top and quick attaches on bottom.



Briggs & Stratton 158 cc series engine for long life and reliability



Model	Engine	Self-Propelled	Bag Volume	Bag	CFM	Weight	Length	Width
LB352	158 cc Briggs & Stratton	No	105 ltr (28 gal)	Felt	743	25.85 kg (57 lb)	119 cm (47")	54.6 cm (21.5")





MV650H

(Honda Push: Hard Surfaces)

MV650SPH/MV600SPE*

(Self-Propelled: Turf. *Electric Start)

Ideal for larger properties, commercial lots, leaf cleanup, rental, parks, city streets, school districts, or municipal festival cleanup. Powerful 6-blade impeller for maximum suction and debris reduction. Picks up cans, bottles, grass clippings, litter and other debris with ease. Abrasion-resistant composite housing components reduce weight and won't rust or dent.

Model	Engine	Self-Propelled	CFM	Bag Volume	Bag	Weight	Length	Width
MV650H	187 cc Honda	No	2500	40 gal (151 ltr)	Mesh Turf	162 lb (73 kg)	61.5" (156 cm)	29" (74 cm)
MV650SPH	187 cc Honda	Yes	2500	40 gal (151 ltr)	Mesh Turf	179 lb (81 kg)	61.5" (156 cm)	29" (74 cm)
MV600SPE*	190 cc Briggs	Yes	2500	40 gal (151 ltr)	Mesh Turf	208 lb (94 kg)	61.5" (156 cm)	29" (74 cm)

*Electric start

MV Features/Benefits



29" gobble door is adjustable from the operator's position for easy switching between hard surface, turf or hose applications.



Unique top fill design keeps dust out of operator's face and ensures optimum filling.



Top loading bag slides in and out on rails for easy unloading. 40-gallon bag holds up to 50 lbs of debris.



3 speed transmission (self-propelled only). Ultra-smooth and extremely durable.



Micro-adjustable height control. Crank style for optimum performance on turf or hard surfaces.



14" custom wheels smooth out the rough areas and make the vacuum manoeuvrable.



Optional electrostatic dust sock kit traps dust for optimum operator and air quality protection. (Part No. 840263)



Optional disposable bag liners come in packs of 12 and eliminate the extra step of bagging your debris. (Part No. 840134)



Optional hose kit attaches to the gobble door. No extra plate is required to close off the air intake. Ideal for those hard to reach areas. (Part No. 840116)



Shown with optional hose kit.
(Part No. 831018)



Low dust, low
noise innovation

QV550/QV550H QV550HSP/QV900HSP

(Briggs or Honda: Hard Surfaces)

The QUIETVAC™ is the world's quietest vacuum. Its unique cyclonic filtration with exclusive dust sock technology drastically reduces dust in dry conditions. The volute housing and 6-blade armor plate steel fan combination provide optimum suction power and 12 to 1 debris reduction for composting in dry conditions. Our 33" wide industrial class hard surface machine is ideal for wide area commercial, industrial and municipal clean-up applications such as tarmacs, school campuses, hospitals, parks, churches, airport pedestrian areas, resorts, city streets and pavements.

NOTE: The dust sock along with the centre filter must be cleaned regularly and kept dry to function properly. Reduce throttle to match conditions and optimize noise dust benefits.

Model	Engine	Self-Propelled	CFM	Bag Volume	Bag	Weight	Length	Width
QV550	205 cc Briggs	No	1665	36 gal (136 ltr)	Mesh Turf	180 lbs (81 kg)	63" (160 cm)	33" (83.8 cm)
QV550H	160 cc Honda	No	1665	36 gal (136 ltr)	Mesh Turf	175 lbs. (79.4 kg)	63" (160 cm)	33" (83.8 cm)
QV550HSP	160 cc Honda	Hydro Drive	1665	36 gal (136 ltr)	Mesh Turf	226 lbs. (102.5 kg)	63" (160 cm)	33" (83.8 cm)
QV900HSP	270 cc Honda	Hydro Drive	1775	36 gal (136 ltr)	Mesh Turf	248 lbs (112.5 kg)	63" (160 cm)	33" (83.8 cm)

QV Features/Benefits/Accessories



Best in class noise reduction. The QV has the lowest dB in its class compared to other vacs on the market with equal engines at the same RPM.



State of the art cyclonic filtration. Innovative cyclonic filtration with exclusive electrostatic dust sock captures a high volume of dust including sub-micron particles as small as 0.1 micron. Cleans easily and is reusable.



Hydro drive transmission. Hydrostatic transmission with infinite forward and reverse speeds, 0-3 mph, and shift on the fly. Negotiate tight spots quickly and with unbelievable ease. (QV550HSP, QV900HSP models)



Four-latch large capacity turf bag holds 36 gallons, plus exclusive **electrostatic dust sock** traps dust for optimum operator and air quality protection. Comes standard. (Part No. 831282)



Debris bag skirt standard (Part No. 831268).



Powerful suction at variable heights. Readily adjust height from 1/2" to 3" to accommodate any hard surface needs.



Durable front castors roll smoothly through turns and over uneven surfaces offering quick task completion.



Optional collapsible on board hose kit with ergonomic handle extension. User-friendly hose kit expands to 10'. Magnetic intake door closure provides trouble-free switching to clean hard to reach areas. (Part No. 831018)

DL1301HEU

Honda

Our 13 HP features include a powerful 14.25" armor plate steel impeller and a 12-gauge steel housing with a replaceable 10-gauge steel liner. The 8" intake hose is a 10' long, clear poly helical coil. This unit is mountable in four ways: Tailgate mountable with optional hanger kit; optional swing away hitch; optional receiver hitch; or skid mounted to a trailer or truck bed.

**STANDARD
DUAL SHREDDING
SYSTEM AND
CUSTOMFIT™
FEATURES FOR
ALL UNITS!**



DL1301HEU

Model	Engine	Hose Dimensions	Impeller	CFM	Discharge	Weight	Length	Width	Height
DL1301HEU	388 cc Honda	8" x 10' (20 cm x 3 m)	4 Blades, 8 cutting points	2100 cfm	7" (18 cm)	238 lb (108 kg)	31" (79 cm)	27" (69 cm)	48" (122 cm)

DL1801V & DL1801VEEU

Vanguard or Vanguard Electric Start

Our heavy-duty 18 HP unit features a 16" diameter armor plate steel impeller, replaceable steel liner and a 12-gauge steel housing for maximum suction power. This unit can be mounted with the optional hanger kit, skid mounted to a truck or trailer bed, or mounted to a class III truck hitch. The 10" intake hose is a 10' long, clear poly helical coil.



DL1801V



DL2500S

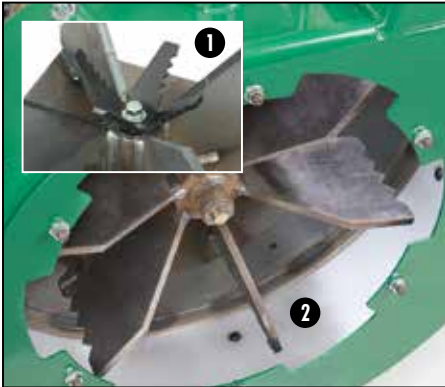
DL2500S

Subaru

Our top of the line loader features a 25 HP engine coupled to our largest 18", 6-blade, armor plate steel impeller with 18 cutting points for up to a 12:1 reduction ratio and includes a replaceable poly liner for the housing. It has a 10-ft clear poly helical coil intake hose and a 12" hose diameter.

Model	Engine	Hose Dimensions	Impeller	CFM	Discharge	Weight	Length	Width	Height
DL1801V	570 cc Vanguard	10" x 10' (25 cm x 3 m)	4 Blades, 8 cutting points	3700 cfm	7" (18 cm)	290 lb (132 kg)	30" (76 cm)	27" (69 cm)	48.5" (123 cm)
DL1801VEEU	570 cc Vanguard E/S	10" x 10' (25 cm x 3 m)	4 Blades, 8 cutting points	3700 cfm	7" (18 cm)	295 lb (134 kg)	30" (76 cm)	27" (69 cm)	48.5" (123 cm)
DL2500S	720 cc Subaru	12" x 10' (31 cm x 3 m)	6 Blades, 18 cutting points	4400 cfm	8" (20.3 cm)	326 lb (142147 kg)	58" (147 cm)	32" (81 cm)	74" (188 cm)

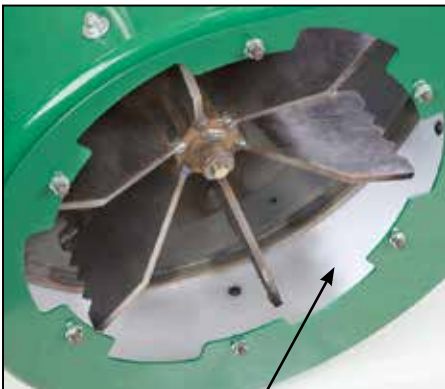
DL Features/Benefits/Accessories



Dual shredding system with Piranha™ blade for extra shredding (photo 1). Replaceable steel liner* and serrated blades with cutting points (photo 2) for the best reduction of ANY debris loader on the market. *DL2500S has a poly liner.



Optional 360 rotational kit No tool, hand adjustable rotating exhaust allows 360 degree positioning. Cannot be used with extension kit. For DL1301 and DL1801 models. (Part No. 812332) Standard on DL2500S.



Replaceable poly liner DL2500S only. (Part No. 791018-S)



Safety kill switch. Quick connect / release hose clamp with safety interlock.



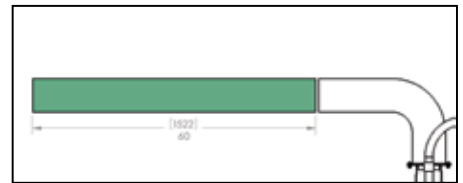
Heavy-duty clear urethane helical intake hoses. User friendly nozzle design and hose connection. **Replacement hose** (Urethane portion only.) Part No. 811244 for DL1301; Part No. 791033 for DL1801; Part No. 791034 for DL2500S.



Optional exhaust deflector kit deflects debris for most efficient loading. (Part No. 812295)



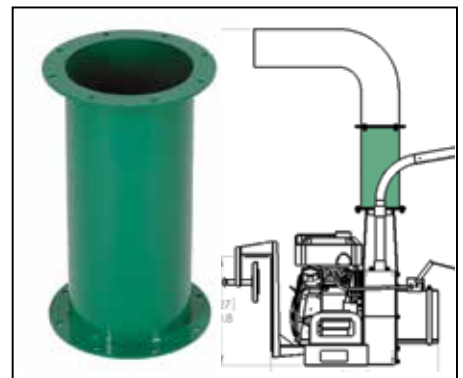
Intake hose storage. Simple secure nozzle hook for convenient and efficient storage.



Optional CustomFit™ discharge hose kits extends discharge by 5' for customization to your truck or trailer.

Urethane hose kit Part No. 791107 for DL2500S; Part No. 812300 for DL1301 and DL1801 models.

Flexible metallic hose kit. For DL2500S only. (Part No. 791106)



Optional CustomFit™ extension kit extends discharge height by 15 5/8". For DL1301 & DL1801. Cannot be used with rotational kit. (Part No. 812273)

Extends discharge height by 2 feet for DL2500S. Can be used with rotational kit. (Part No. 791600)

DL CustomFit™ Accessories & Mounting Options



Optional CustomFit™ stake body swing away hitch. (Part No. SBSA6) For DL1301 & DL1801 models only.



Optional CustomFit™ swing away hitch. (Part No. SAH34) is mountable to a class III trailer hitch and locks at 90 and 180 degrees so the unit can be swung away for easy dumping. (DL1301 and DL1801 models only.)



Optional CustomFit™ hanger kit. Easy to install, locks in place with 2 bolts. DL1301 and DL1801 models only. (Part No. 812260)



Trailer tongue mount (Skid). Perfect solution for contractors. Simply mount to the tongue of your trailer. All units come standard as skid mounts.



Optional CustomFit™ receiver hitch. Well priced and easy to install and remove, the receiver hitch easily mounts to your truck and is ideal for use with Billy Goat DL13-18 loaders. (Part No. 812601)

CustomFit™ trailer (Part No. 791152) is an ideal solution for most any crew wanting mobility and a smooth ride at motorway speeds. Includes light kit. (DL2500S model only.)

DL2500S Shown with trailer (Product code: 791152)





Henton & Chattell Ltd
 London Road
 Nottingham
 NG2 3HW

Tel: 0115 986 2161
 Email: billygoatuk@hcuk.co
 Web: www.billygoat.co.uk

Billy Goat products are powered by engines from:



© 2015 Billy Goat Industries, Inc.
 Specifications subject to change without notice.

Billy Goat Industries is proud to be a member of the following organizations:



Billy Goat Industries is proud to be a supporter of:



Clean up in all seasons with Billy Goat!